

# WORKING SPACES TODAY

## **WORKING SPACES TODAY**

**Author:** Carles Broto

**Editorial coordination:** Jacobo Krauel

**Graphic design & production:** Roberto Bottura

**Collaborator:** Oriol Vallés

**Text:** Contributed by the architects, edited by Naomi Ferguson

## **© LINKSBOOKS**

Jonqueres, 10, 1-5

08003 Barcelona, Spain

Tel.: +34-93-301-21-99

Fax: +34-93-301-00-21

**info@linksbooks.net**

**www.linksbooks.net**

© This is a collective work. In accordance with Intellectual Property Law “collective works” are NOT necessarily those produced by more than one author. They have been created by the initiative and coordination of one person who edits and distributes them under his/her name. A collective work constitutes a collection of contributions from different authors whose personal contributions form part of a creation, without it being possible to separately attribute rights over the work as a whole.

© All rights reserved. No part of this book may be used or reproduced in any manner whatsoever without written permission except in the case of brief quotations embodied in critical articles and reviews.

**LINKS**

# SUE Architekten

## Prayer RaHS

Vienna, Austria

Photographs: Hertha Hurnaus

Two notaries joined forces and founded a new office in Vienna with the desire to bring a fresh and contemporary feel to their workplace. Initial discussions were held, aided by the architects, to find the right building. A 390-sqm loft in a former telegraph office was selected: a space that expands from a relatively narrow entrance area into a generous, open loft area.

The plan for the office was honed in numerous meetings with the clients, the goal being a workplace that not only creates a communicative climate, but also enables concentrated and uninterrupted work. The result is a layering of the office structure that maximises the potential of the location: at first a friendly entrance area to receive clients, followed by a general office and working area to provide an intimate and concentrated, while still relaxed, communicative atmosphere.

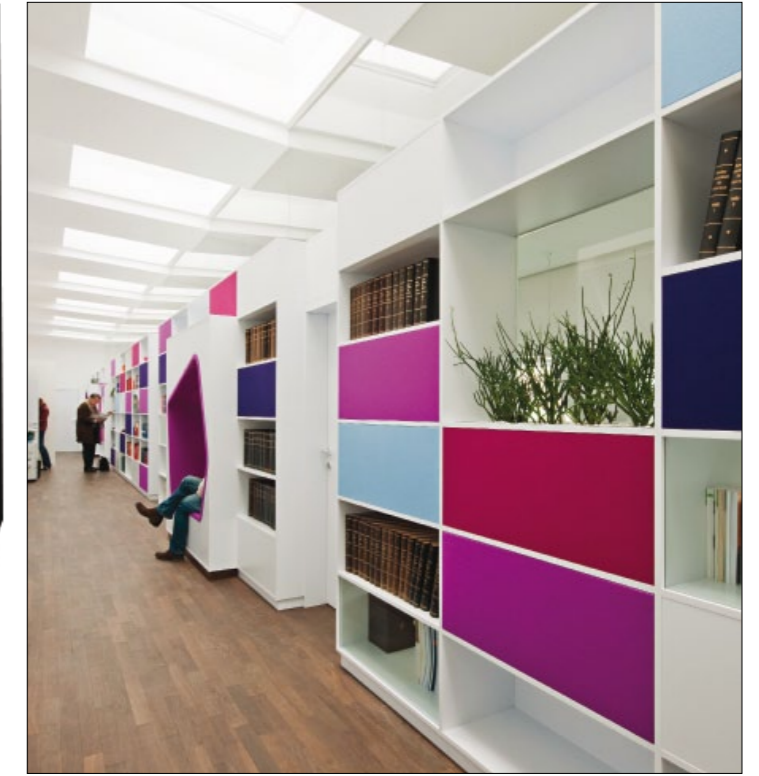
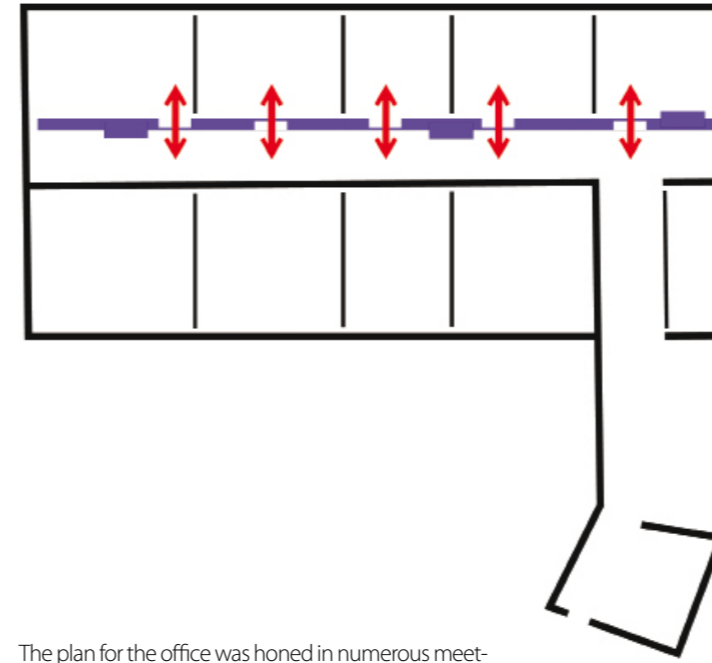
The focus in the central working area is on communication between staff. Stretched storage furniture separates the working area from the hall and communication zone. On one side there are generous cubicles and a meeting room, on the other side of the hall are seating niches, space for photocopiers and a common working area that is shaped by storage furniture. Small windows from the hall allow glimpses into the working areas. The other side of the hall leads to further individual offices.

The layering between the entrance area and the central working space is additionally supported by varying material and colours. Sand-coloured walls and floor tiling dominate the friendly reception, while the furniture used to define the rooms are a dark oak. White room furniture with textile patches, custom-arranged in each room, dominate the central area. The generous impression of space provided by the loft is maintained, despite the visual and acoustic separation of the rooms from each other.

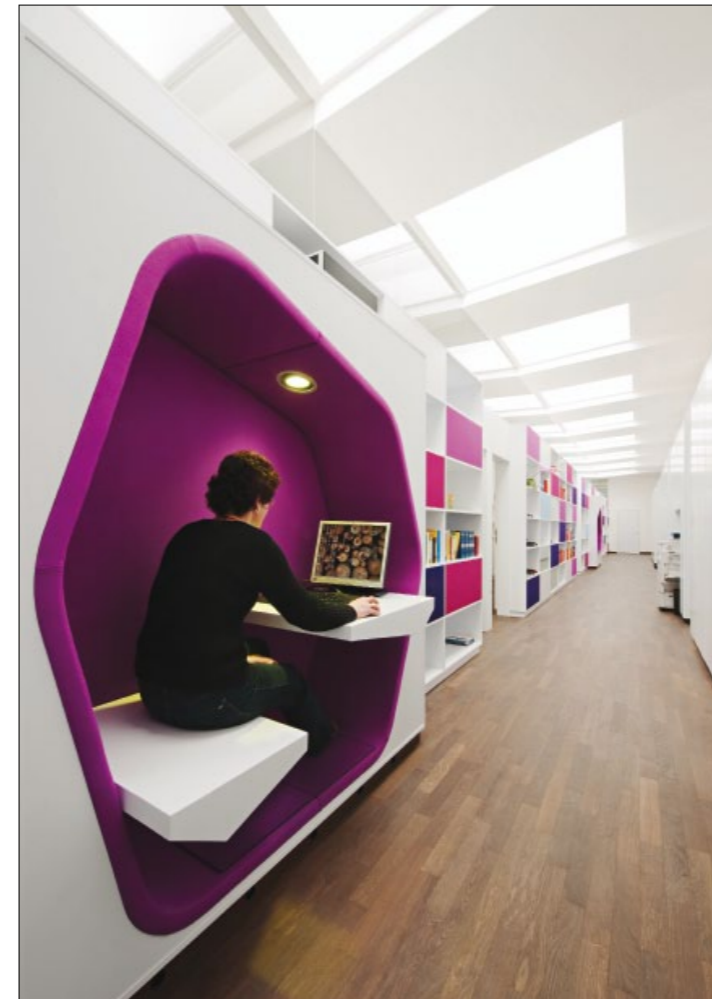
**Architecture:**  
SUE Architekten

**Floor area:**  
390 sqm (4,198 sqft)

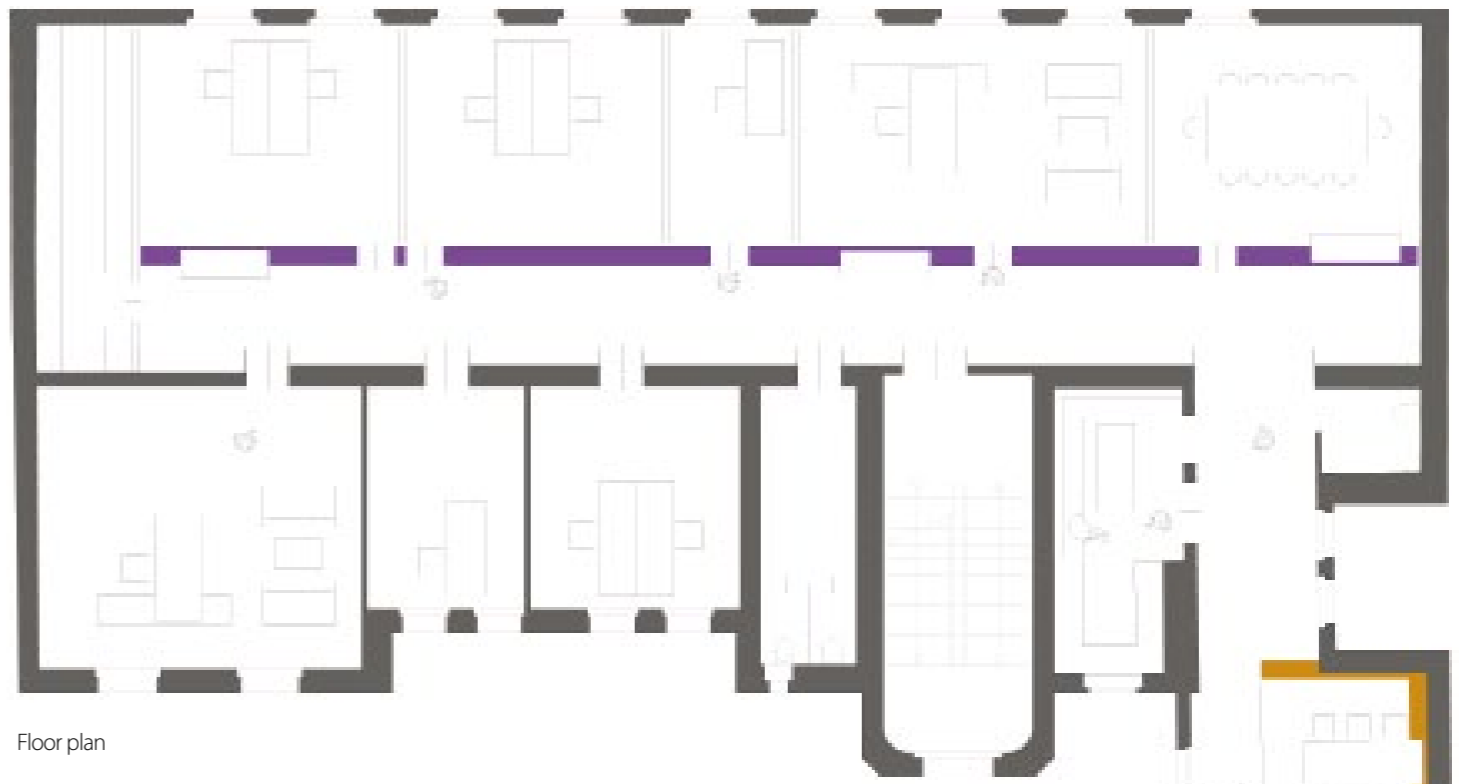




The plan for the office was honed in numerous meetings with the clients, the goal being a workplace that not only creates a communicative climate, but also enables concentrated and uninterrupted work.







Floor plan

