

FK AUSTRIA WIEN TRAINING ACADEMY 奥地利维也纳 FK 足球培训学院

Location: Vienna, Austria

Completed Date: 2010

Site Area: 34 000 m²

Gross Floor Area: 2 482 m²

Architectural Design: franz zt gmbh, atelier mauch gmbh

Photography: stephan wychoff

Copyright: franz zt gmbh, atelier mauch gmbh

项目地点: 奥地利, 维也纳

建成时间: 2010 年

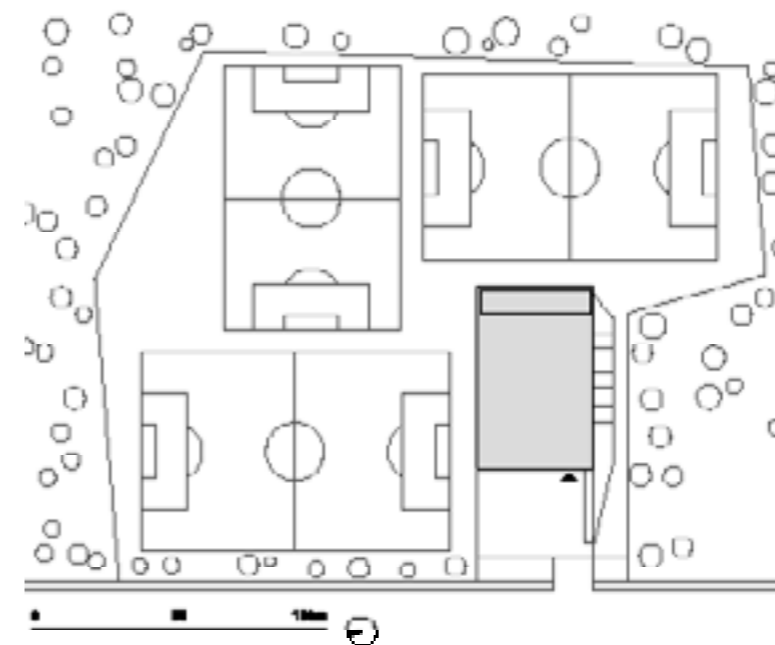
用地面积: 34 000 平方米

建筑面积: 24 82 平方米

建筑设计: franz zt gmbh、atelier mauch gmbh

摄影: stephan wychoff

版权: franz zt gmbh、atelier mauch gmbh



总平面图

Features

The training hall is lowered half below ground.

项目特色

训练厅的一半被埋入地下

01 室内训练馆及室外球场

01



A sporting challenge the academy training grounds of the junior teams of Austria Vienna - one of the most traditional football clubs in Austria - lies close to the 'Franz Horr Stadium'. they include a training hall and three grass pitches. the construction budget was extremely tight and the construction time limited to six months, and the handover date after completion a strict requirement in order to obtain the license of the Austrian Football League. Vienna building regulations set a maximum building height of 4.5 m and so the 7,0 m required clearance height in the training hall created an inevitable consequence: the entire building had to be lowered half below ground.

作为奥地利最传统的足球俱乐部之一，奥地利维也纳少年足球队培训学院的训练场坐落于 Franz Horr 体育场的旁边，包含一所训练馆和三个草地球场。该项目的建造预算十分紧张，工期也只有六个月，连建成之后的交付日期都做了严格的规定，以获取奥地利足球联盟的经营许可证。维也纳的市政规定该区域的建筑的高度规范为 4.5 米，而训练馆所需要的净空高度又是 7 米，因此这迫使该设计将整座训练馆的一半都放到地下。

To assist the long-term refinancing of the construction budget, the principle of a football advertising board has been turned inside-out: a big roof with a beam and parapet height of 2.0 m is the dominant design element. sponsors can advertise and demonstrate their support of junior teams on the popular Laaerbergstraße.

为了支持该建筑在预算上的长期集资，一个足球广告版被翻了个里朝外：大大的房顶加上一个高两米的房梁和护墙就是主要的设计元素。赞助商可以在人气鼎沸的 Laaerbergstraße 街上展示他们对少年足球队的支持。



02



03

The roof cantilevers out a few meters on all sides and forms a generous, weather-resistant perimeter for entrances and terraces. on the eastern wing, a compact roof construction over the storage spaces is utilised as a roof terrace, where coaches and visitors are afforded a clear view over the heated artificial pitch.

此外，训练馆的屋顶也向各个方向都外延了好几米，为入口和门廊都形成了一个宽敞防雨的屋檐。训练馆东侧，一个存储区域上空的屋顶结构被用作了屋顶平台，教练和参观者也可以在这里清晰的看到整个人工球场。

The training hall forms the heart of the building and enjoys glare-free north light. the other sides are extremely compact and efficiently arranged - a cafeteria, offices, fitness rooms and massage and storage rooms. the access corridor on the ground floor works like a gallery to the sunken playing field. the required emergency escape for the offices and fitness rooms is organised in a series terraces.

作为整座建筑的核心，练习馆有着柔和的北向采光，其他几面则布置得非常紧凑，包括一间咖啡厅、几间办公室、健身房、按摩及储存室。底楼的入口走廊被用作通往下沉式操场的走廊，而办公室和健身房必需的紧急撤离通道则被安排在一系列的露台上。

The sportshall with it's artificial grass floor and birch plywood-impact protection walls provides the ideal atmosphere and a platform for concentrated training without distraction.

练习馆的地面植有人工草皮，墙壁也都铺有桦木胶合板，为运动员们在这里进行不受打扰的训练提供了理想的氛围和平台。

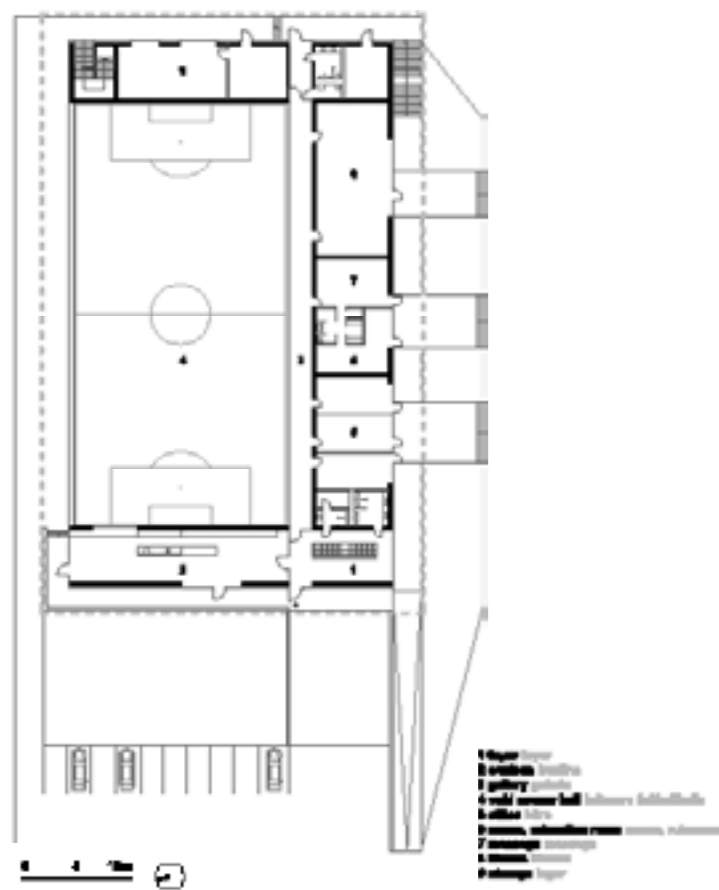
02 训练馆地上建筑部分近景

03 学校近景

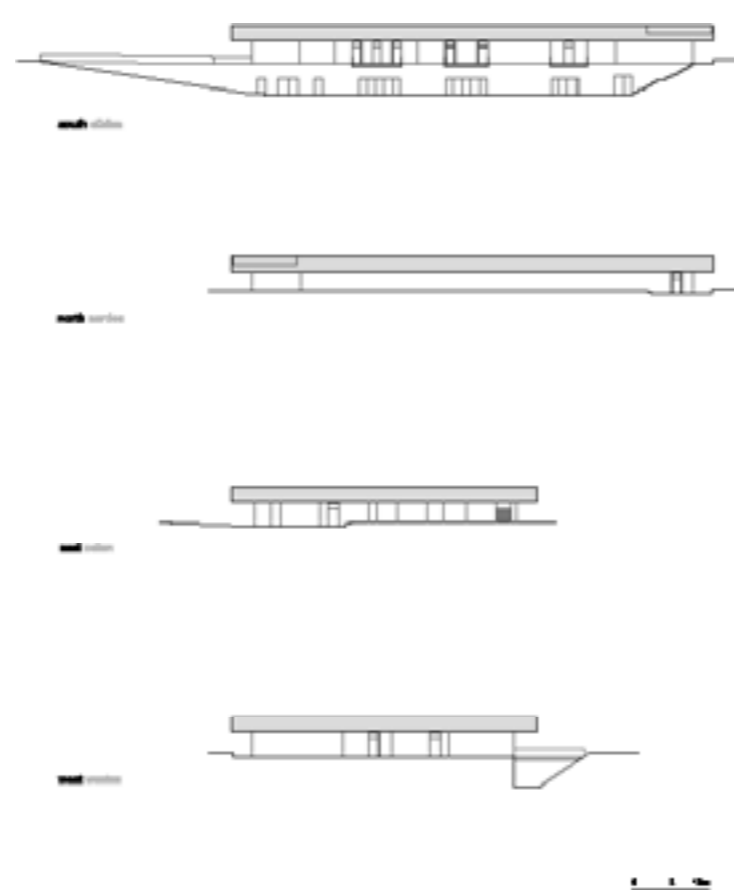
04 露台



04



一层平面图



立面图

low-temperature wall heating is utilised rather than conventional air heating. The artificial turf is carried through to the circulation zone which operates as a pre-warming buffer zone. all changing areas have natural daylight and direct access to the outside even though they are located in the basement. this is made possible because of the wide ramp that doubles up as a means of delivery and an ideal sprint training zone.

在温度方面，该楼采用了低温墙供暖系统，而非传统的空气加热。人工草皮一直铺到了流通区域，也就是预加热的缓冲地带。所有的空间都享有自然采光，即便是从地下室也可以直通外界，因为宽敞的匝道垒起来可以作为运输通道，还可以充当一个理想的短跑训练区。

rainwater from the 2.500m² roof surface is collected in large 120,000 liter tanks and serves as irrigation for the grass. the entire building is served by district heating.

该训练馆的房顶面积总共为 2 500 平方米。遇到下雨，屋顶的雨水则都汇集到一个容积为 120 000 升的水箱中，再被用来浇灌草坪。整座建筑都享有区域集中供暖。



06

05-06 埋入地下的训练馆室内空间
07 贴着桦木胶合板的室内训练馆墙壁



05



07